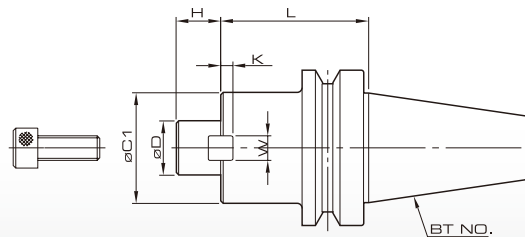


# FMC 面銑刀用 BT 刀把 FACE MILL ARBOR



Dimensions / 尺寸標示



Order No. 訂購編號		øD	øC1	L	H	K	W	Lock Screw 鎖緊螺栓
BT30 (BTT30)	FMC22-045	22	45	45	18	5	10	M10
	FMC25.4-060	25.4	45	60	20	5	9.5	M12
BT40 (BTT40)	FMC22-045	22	48	45	18	5	10	M10
	FMC25.4-060	25.4	50	60	20	5	9.5	M12
	FMC27-060	27	58	60	20	6	12	M12
	FMC32-060	32	78	60	22	7	14	M16
BT50 (BTT50)	FMC25.4-090	25.4	50	90	20	5	9.5	M12
	FMC27-090	27	58	90	20	6	12	M12
	FMC32-090	32	78	90	22	7	14	M16

Applications / 應用



Face Milling  
面銑