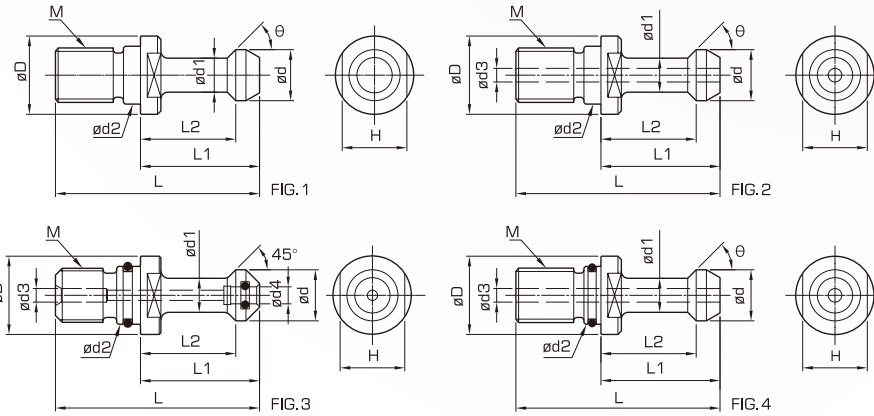


SPARE PARTS

拉桿

PULL STUD

BT拉桿螺栓規格 MAS403/JIS 6339



拉桿型式對照表

Comparison table of pull stud

	BT 刀把		SK 刀把	
	C	RC	A	BR
中心出水孔	■	■	■	■
附 O-Ring	■	■	■	■
30	■	■	■	■
40	■	■	■	■
50	■	■	■	■

Order No.

訂購編號

Order No. 訂購編號	FIG	øD	ød	ød1	ød2	ød3	ød4	L	L1	L2	M	H	θ
PSD-P30T-12	1	17	11	7	13	-	-	43	23	18	M12xP1.75	13	45°
PSD-P30T-13	1	17	11	7	13	-	-	43	23	18	M12xP1.75	13	45°
PSD-P30T-12C	2	17	11	7	13	2	-	43	23	18	M12xP1.75	13	45°
PSD-P30T-13C	2	17	11	7	13	2	-	43	23	18	M12xP1.75	13	45°
PSD-P30T-12RC	4	17	11	7	13	2	-	43	23	18	M12xP1.75	13	45°
PSD-P30T-22	1	17	11	7	13	-	-	43	23	18	M12xP1.75	13	60°
PSD-P30T-23	1	17	11	7	13	-	-	43	23	18	M12xP1.75	13	60°
PSD-P30T-22C	2	17	11	7	13	2	-	43	23	18	M12xP1.75	13	60°
PSD-P30T-23C	2	17	11	7	13	2	-	43	23	18	M12xP1.75	13	60°
PSD-P40T-12	1	23	15	10	17	-	-	60	35	28	M16xP2.0	19	45°
PSD-P40T-13	1	23	15	10	17	-	-	60	35	28	M16xP2.0	19	45°
PSD-P40T-12C	2	23	15	10	17	4	-	60	35	28	M16xP2.0	19	45°
PSD-P40T-13C	2	23	15	10	17	4	-	60	35	28	M16xP2.0	19	45°
PSD-P40T-12RC	3	23	15	10	17	3	5	60	35	28	M16xP2.0	19	45°
PSD-P40T-22	1	23	15	10	17	-	-	60	35	28	M16xP2.0	19	60°
PSD-P40T-23	1	23	15	10	17	-	-	60	35	28	M16xP2.0	19	60°
PSD-P40T-22C	2	23	15	10	17	4	-	60	35	28	M16xP2.0	19	60°
PSD-P40T-23C	2	23	15	10	17	4	-	60	35	28	M16xP2.0	19	60°
PSD-P40T-32	1	23	15	10	17	-	-	60	35	28	M16xP2.0	19	90°
PSD-P40T-33	1	23	15	10	17	-	-	60	35	28	M16xP2.0	19	90°
PSD-P40T-33C	2	23	15	10	17	4	-	60	35	28	M16xP2.0	19	90°
PSD-P50T-12	1	38	23	17	25	-	-	85	45	35	M24xP3.0	30	45°
PSD-P50T-13	1	38	23	17	25	-	-	85	45	35	M24xP3.0	30	45°
PSD-P50T-12C	2	38	23	17	25	7	-	85	45	35	M24xP3.0	30	45°
PSD-P50T-13C	2	38	23	17	25	7	-	85	45	35	M24xP3.0	30	45°
PSD-P50T-12RC	3	38	23	17	25	6	8	85	45	35	M24xP3.0	30	45°
PSD-P50T-22	1	38	23	17	25	-	-	85	45	35	M24xP3.0	30	60°
PSD-P50T-23	1	38	23	17	25	-	-	85	45	35	M24xP3.0	30	60°
PSD-P50T-22C	2	38	23	17	25	7	-	85	45	35	M24xP3.0	30	60°
PSD-P50T-23C	2	38	23	17	25	7	-	85	45	35	M24xP3.0	30	60°
PSD-P50T-32	1	38	23	17	25	-	-	85	45	35	M24xP3.0	30	90°
PSD-P50T-33	1	38	23	17	25	-	-	85	45	35	M24xP3.0	30	90°
PSD-P50T-32C	2	38	23	17	25	7	-	85	45	35	M24xP3.0	30	90°
PSD-P50T-33C	2	38	23	17	25	7	-	85	45	35	M24xP3.0	30	90°

• 訂購編號末碼數字表示：2- 普慧製，3- 台製