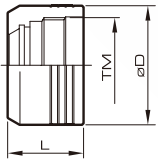


SPARE PARTS

螺帽 NUT

HER螺帽

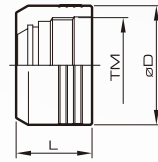
HER NUT



Order No. 訂購編號	øD	L	TM	SPANNER 使用扳手
CAP-HER16	30	23.4	TM22x1.5	PHS-HER16-RO30
CAP-HER20	32	24.6	TM26x1.5	PHS-HER20-RO32
CAP-HER25	40	25.6	TM32x1.5	PHS-HER25-RO40
CAP-HER32	50	26.9	TM40x1.5	PHS-HER32-RO50

HER-C止水型螺帽

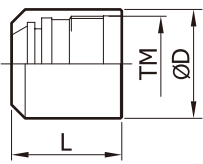
HER COOLANT TYPE NUT



Order No. 訂購編號	øD	L	TM	SPANNER 使用扳手
CAP-HER16C	30	26.4	TM22x1.5	PHS-HER16-RO30
CAP-HER20C	32	27.6	TM26x1.5	PHS-HER20-RO32
CAP-HER25C	40	28.9	TM32x1.5	PHS-HER25-RO40
CAP-HER32C	50	30.1	TM40x1.5	PHS-HER32-RO50

THER 小徑螺帽

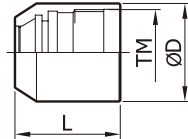
THER HIGH SPEED NUT



Order No. 訂購編號	øD	L	TM	SPANNER 使用扳手
CAP-THER11	16	16.2	TM14x0.75	PHS-THER11-RO16
CAP-THER16	22	21	TM20x1.0	PHS-THER16-RO22

THER-C 止水型小徑螺帽

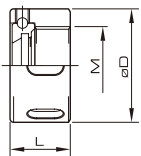
THER-C COOLANT TYPE HIGH SPEED NUT



Order No. 訂購編號	鎖緊範圍 Clamping Range		øD	L	M	SPANNER 使用扳手
	3,4,5,6,7	1-10				
CAP-THER11C	3,4,5,6,7	16	18.7	TM14x0.75	PHS-THER11-RO16	
CAP-THER16C	1-10	22	23.9	TM20x1.0	PHS-THER16-RO22	

ER鋼珠螺帽

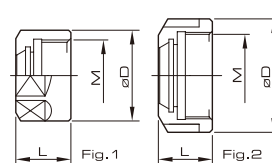
ER BALL BEARING NUT



Order No. 訂購編號		normal 一般精密型		for high speed 高速加工用		SPANNER 使用扳手
		øD	L	M	M	
CAP-ER11B	CAP-ER11BR	23.5	12	M14x0.75	PHS-ER11B	
CAP-ER16B	CAP-ER16BR	32	17	M22x1.5	PHS-ER16B	
CAP-ER20B	CAP-ER20BR	36	19	M25x1.5	PHS-ER20B	
CAP-ER25B	CAP-ER25BR	43	20	M32x1.5	PHS-ER25	
CAP-ER32B	CAP-ER32BR	51	22.3	M40x1.5	PHS-ER32	
CAP-ER40B	-	63	25.3	M50x1.5	PHS-ER40	

ER螺帽

ER NUT



Order No. 訂購編號	øD	L	M	FIG	SPANNER 使用扳手
CAP-ER11	19	11.5	M14x0.75	1	PHS-ER11
CAP-ER16	28	17	M22x1.5	1	PHS-ER16
CAP-ER20	34	19	M25x1.5	1	PHS-ER20
CAP-ER25	42	20	M32x1.5	2	PHS-ER25
CAP-ER32	50	23	M40x1.5	2	PHS-ER32
CAP-ER40	63	26	M50x1.5	2	PHS-ER40
CAP-ER50	78	35.3	M64x2.0	2	PHS-ER50