

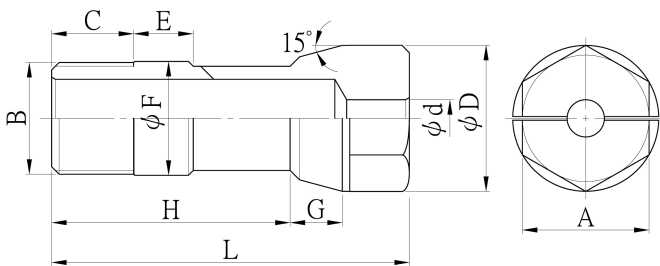
# 六角筒夾

## HEXAGON HEAD COLLET

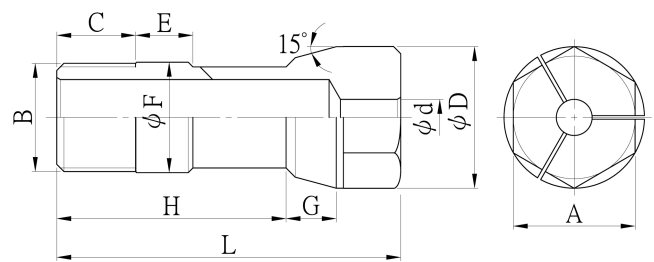


### ● 鑽孔用 FOR DRILLS

規格 MODEL	∅d	∅D	A	B	L	GIF	C	E	∅F	G	H
CD6	∅1.5 - ∅2.1	12.7	10	M10xP1.0	35	1	11	6	10.5	5	25
	∅ 2.2-6.0					2					
CD10	∅ 2.0-2.1	19.6	17	M15xP1.0	48	1		8	15.3	7	32
	∅2.2- ∅10.0										
CD13	∅3.0-13.0	23	19	M18xP1.5	53	2	10	8	18.5	8.5	34.5



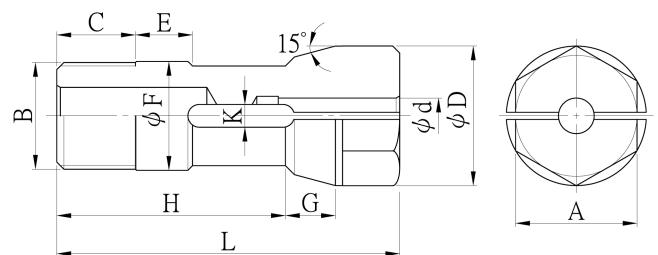
GIF.1



GIF.2

### ● 攻牙用 FOR TAPS

規格 MODEL	∅d	∅D	A	B	L
CT6	∅3.0- ∅6.0	12.7	10	M10xP1	35
CT10	∅4.0- ∅8.5	19.6	17	M15xP1	48
CT13	∅5.0- ∅12.5	23	19	M18xP1.5	53



※ 特殊尺寸或左牙亦可承製。

※ Special size or left-hand thread is available on request.

註:∅d係為牙攻柄部直徑及四角柄寬度K。

NOTE:∅d is tap shank diameter.K is width of the end square shank.