



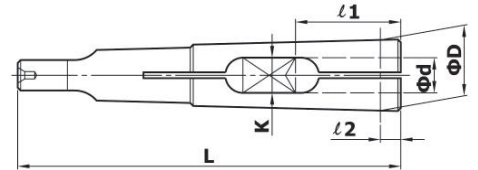
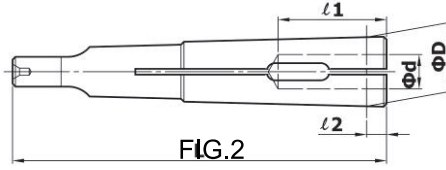
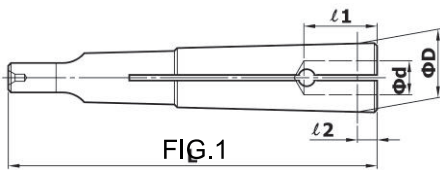
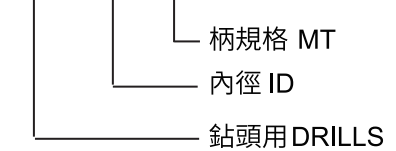
● 鉋頭用莫式推拔筒夾規格 MODELS for DRILLS

鉋頭直徑 (d) SHANK DIA.(d)	MT.NO	D	L	ℓ1	ℓ2	ℓ3	J	FIG.
2.0~2.3	MT.1	12.065	65.5	13	3.5			1
2.4~2.7				14				
2.8~3.1				16				
3.2~3.9				19				
4.0~4.7				22				
4.8~6.3	MT.2	17.78	80	25	5	7	3	2
6.4~7.9				29		8	4	
8.0~9.5				32		9	5	
9.6~11.9				33		10	6	
12.0~13.0				11		7		
				13		8.5		

- ℓ1 為鉋頭插入總深度。
- ℓ3 為鉋頭舌盾樺長度。
- J 為鉋頭舌樺寬度。
- ℓ1 is the insert length of drill.
- ℓ3 is the length of drill tenon.
- J is the thickness of drill tenon.

訂購例：Order

DD - 3.0 x 1



● 牙攻用莫式推拔筒夾規格 MODELS for TAPS

牙攻柄部直徑 (d) SHANK DIA.(d)	MT.NO	D	L	ℓ1	ℓ2	K	適用牙攻 TAP	
							公制 METRIC	英制 INCH
3	MT.1	12.065	65.5	16	3.5	2.5	1~2.5	#0~#4
4				20		3, 3.5	#5, #6	
5				23		4, 4.5	#8	
5.5				24		5, 5.5	#10, #12	
6				25		6	1/4	
6.1	MT.2	17.78	80	26	5	5	-	5/16
6.2				27		7.8	-	
7				28		9, 10	3/8	
8				29		6	11	7/16
8.5				30		6.5	12	-
9				31		7	-	1/2
9.5				32		13	-	
10.5				33		8	14, 15	9/16

ℓ1 直徑 d 及四角柄寬度 K。

(註)

- ℓ1 為牙攻插入總深度。
- 本表不適用於管用牙攻，如欲訂購請註明之。
- d 為牙攻柄部直徑，K 為牙攻四角柄寬度。
- 適用牙攻為例舉，其他牙攻宜在定購時註明牙攻柄部。

NOTE:

- ℓ1 is the insert length of tap.
- This table is not used for pipe taps, please indicate when order.
- d is tap shank diameter. K is width of the end square shank.
- Please indicate d and K for other special taps.



● 鑽孔用 FOR DRILLS

規格 MODEL	∅d	∅D	A	B	L	GIF	C	E	∅F	G	H
CD6	∅1.5 - ∅2.1	12.7	10	M10xP1.0	35	1	11	6	∅10.5	5	25
	∅ 2.2-6.0					2					
CD10	∅ 2.0-2.1	19.6	17	M15xP1.0	48	1	8	∅15.3	7	32	
	∅2.2-∅ 10.0										
CD13	∅3.0-13.0	23	19	M18xP1.5	53	2	10	8	∅18.5	8.5	34.5

訂購例：Order
CD6 - 3.0

內徑
ID
鑽孔用
DRILLS

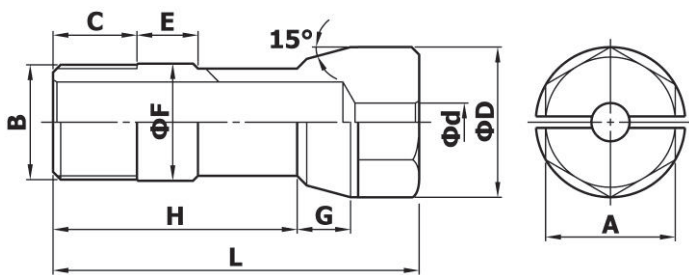


FIG.1

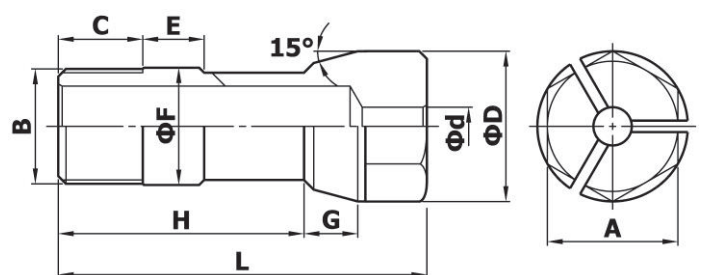
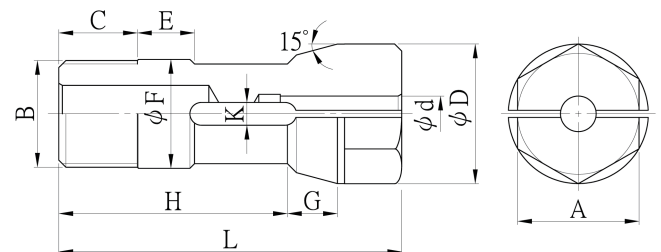


FIG.2

● 攻牙用 FOR TAPS

規格 MODEL	∅d	∅D	A	B	L
CT6	∅3.0- ∅6.0	12.7	10	M10xP1	35
CT10	∅4.0- ∅8.5	19.6	17	M15xP1	48
CT13	∅5.0- ∅12.5	23	19	M18xP1.5	53



※ 特殊尺寸或左牙亦可承製。

※ Special size or left-hand thread is available on request.

註:∅d係為牙攻柄部直徑及四角柄寬度K。

NOTE:∅d is tap shank diameter.K is width of the end square shank.

訂購例：Order

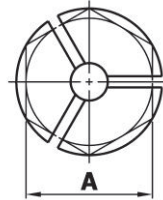
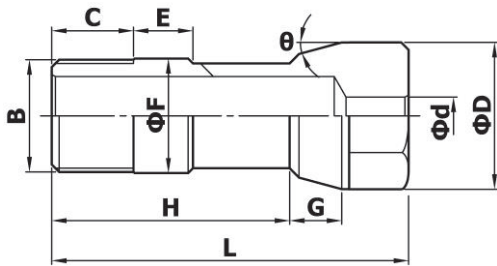
CT6 - 3.0

內徑
攻牙用 TAPS



● 鑽孔用 FOR DRILLS

規格 MODEL	∅d	∅D	A	B	L	C	E	∅F	G	H	θ
IC4	∅ 1.1-∅ 4.0	∅ 8	6	1/4-28 UNF	22	6.5	6.5	∅ 6.5	4	13	12°
IC5	∅ 1.1-∅ 5.0	∅ 10.8	8	5/16-24 UNF	30	8	6	∅ 8.5	5	19	
IC6	∅ 1.1-∅ 6.0	∅ 13.2	10	3/8-24 UNF	36	12	7	∅ 10	7	23	14.5°
IC9	∅ 3.0-∅ 8.0	∅ 17	14	1/2-20 UNF	45	13	9	∅ 13	8	29	
IC12	∅ 6.0-∅ 11.0	∅ 21.2	17	5/8-18 UNF	48		10	∅ 16.5		31	15°
IC14	∅ 6.0-∅ 13.0	∅ 24.6	21	3/4-16 UNF	53	14	11	∅ 20	9	34	14.5°
IC16	∅ 10.0-∅ 18.0	∅ 31	26	M24xP2.0	70	18	15	∅ 25	12	44	15°



訂購例：Order

IT6 - 12.0

└── 內徑 ID

└── 攻牙用 DRILLS

● 攻牙用 FOR TAPS

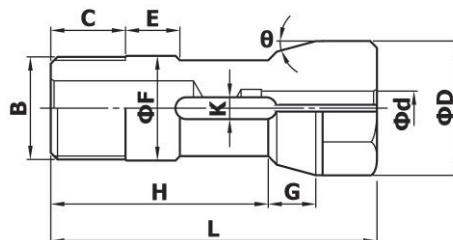
規格 MODEL	∅d	∅D	A	B	L	C	E	∅F	G	H	θ
ICT4	∅ 1.1-∅ 4.0	∅ 8	6	1/4-28 UNF	22	6.5	6.5	∅ 6.5	4	13	12°
ICT5	∅ 1.1-∅ 5.0	∅ 10.8	8	5/16-24 UNF	30	8	6	∅ 8.5	5	19	
ICT6	∅ 1.1-∅ 6.0	∅ 13.2	10	3/8-24 UNF	36	12	7	∅ 10	7	23	14.5°
ICT9	∅ 3.0-∅ 8.0	∅ 17	14	1/2-20 UNF	45	13	9	∅ 13	8	29	
ICT 12	∅ 6.0-∅ 11.0	∅ 21.2	17	5/8-18 UNF	48		10	∅ 16.5		31	15°
ICT 14	∅ 6.0-∅ 13.0	∅ 24.6	21	3/4-16 UNF	53	14	11	∅ 20	9	34	14.5°
ICT 16	∅ 10.0-∅ 18.0	∅ 31	26	M24xP2.0	70	18	15	∅ 25	12	44	15°

※ 特殊尺寸或左牙亦可承製。

※ Special size or left-hand thread is available on request.

註：∅d係為牙攻柄部直徑及四角柄寬度K。

NOTE: ∅d is tap shank diameter. K is width of the end square shank.



訂購例：Order

IC16- 12.0

└── 內徑 ID

└── 攻牙用 TAPS