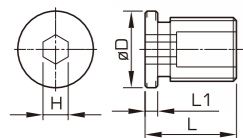


SPARE PARTS

螺栓 BOLT

調整螺絲 應用於油壓 (HY) 刀把

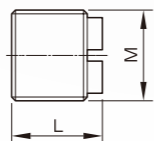
ADJUST SCREW
APPLY TO HY HOLDER



Order No. 訂購編號	L	L1	øD	H
HY06-M5	14.5	2	6	2.5
HY08-M6	14.5	2	8	2.5
HY14-M8	14.5	2	11.5	4
HY18-M12	14.5	2	15.5	4
HY25-M16	14.5	2	24.5	4

調整螺絲 應用於ER刀把

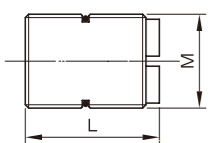
ADJUST SCREW
APPLY TO ER HOLDER



Order No. 訂購編號	L	M
ER-M8	10	M8x1.0
ER-M11	12	M11x1.0
ER-M14	12	M14x1.0
ER-M18	12	M18x1.5
ER-M22	12	M22x1.5
ER-M28	12	M28x1.5
ER-M36	12	M36x1.5

出水型調整螺絲 應用於 ER刀把

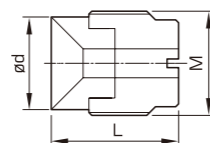
COLLANT TYPE SCREW
APPLY TO ER HOLDER



Order No. 訂購編號	L	M
ER-M8C	20	M8x1.0
ER-M11C	20	M11x1.0
ER-M14C	20	M14x1.0
ER-M18C	20	M18x1.5
ER-M22C	20	M22x1.5
ER-M28C	20	M28x1.5
ER-M36C	20	M36x1.5

出水型調整螺絲 應用於 PFC刀把

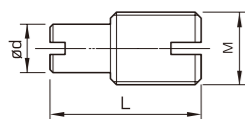
COOLANT TYPE SCREW
APPLY TO PFC HOLDER



Order No. 訂購編號	øD	L	M
PFC20-M18C	16	22	M8x1.5
PFC25-M22C	20	27	M22x1.5
PFC32-M28C	26	32	M28x1.5

調整螺絲 應用於 PFK刀把

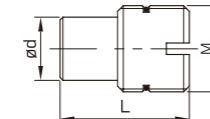
ADJUST SCREW
APPLY TO PFK HOLDER



Order No. 訂購編號	ød	L	M
PFK-M8	6	25	M8x1.0
PFK-M12	8	25	M12x1.0
PFK-M18	14	33	M18x1.5
PFK-M28	24	30	M28x1.5

出水型調整螺絲 應用於 PFK刀把

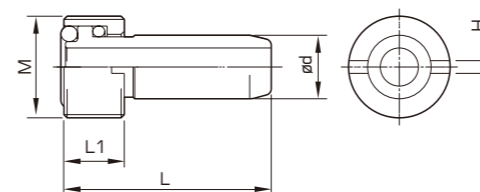
COOLANT TYPE SCREW
APPLY TO PFK HOLDER



Order No. 訂購編號	ød	L	M
PFK-M8C	6	25	M8x1.0
PFK-M12C	8	25	M12x1.0
PFK-M18C	14	33	M18x1.5
PFK-M28C	24	30	M28x1.5

中心出水管 應用於HSK刀把

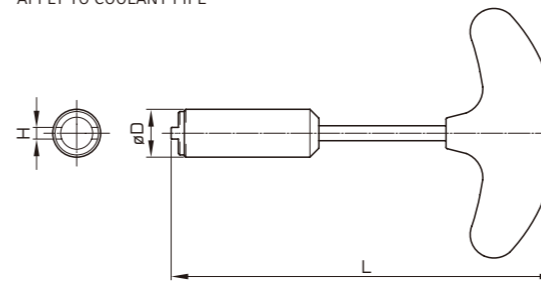
COOLANT PIPE
APPLY TO HSK SHANK
TOOL HOLDER



Order No. 訂購編號	M	ød	L	L1	H
HSK32P	M10xP1.0	6	25.5	5.4	2.5
HSK40P	M12xP1.0	8	29.4	7.5	3
HSK50P	M16xP1.0	10	32.6	9.5	4
HSK63P	M18xP1.0	12	36.2	10.4	5
HSK100P	M24xP1.5	16	44	15.4	6

扳手 應用於中心出水管

SPANNER
APPLY TO COOLANT PIPE



Order No. 訂購編號	L	ød	H
PHS-HSK32P	123.5	13	2.4
PHS-HSK40P	127.4	13	2.9
PHS-HSK50P	128.9	16	3.9
PHS-HSK63P	132.4	18	4.9
PHS-HSK100P	180.4	22	5.9

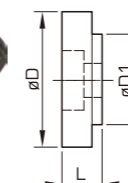
鎖緊螺栓

應用於 FMA, FMB 刀把
BOLT APPLY TO FMA, FMB HOLDER



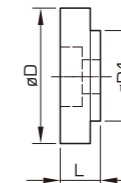
Order No. 訂購編號	L
M18x1.25	25
M10x1.5	25
M12x1.75	30
M16x2	35
M20x2.5	40

FMA 介止 Spacer Ring



Order No. 訂購編號	L	øD	øD1	適用螺柱
FMSP-25.4	16	33	25.4	M12X1.75
FMSP-31.75	20	40	31.75	M16X2
FMSP-38.1	25	50	38.1	M20X2.5

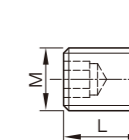
FMB 介止 Spacer Ring



Order No. 訂購編號	L	øD	øD1	適用螺柱
FMSP-16	12	20	16	M18X1.25
FMSP-22	15	28	22	M10X1.5
FMSP-27	16	33	27	M12X1.75
FMSP-32	20	40	32	M16X2
FMSP-40	25	50	40	M20X2.5

鎖緊螺絲

應用於 SLE刀把
SET SCREW
APPLY TO SLE HOLDER



Order No. 訂購編號	L	M
SLA-M6	10	M6xP1.0
SLA-M8	10	M8xP1.25
SLA-M10	12	M10xP1.5
SLA-M12	16	M12xP1.75
SLA-M16	16	M16xP2.0
SLA-M20	20	M20xM2.5

螺栓 BOLT