

### 功能：

- 本體經調質及熱處理，增加本身之強度及增長使用壽命。
- 前端採用純質鎢鋼，增強頂心前端之精度與壽命。
- 鎢鋼與柄部之結合採國外先進技術，扭力特強。
- 鎢鋼之頂徑大，可適用於多樣孔徑之中心。
- 為適應客戶多層需要，標準規格中亦採用多種長短大小規格，方便您做多項條件之稱心選擇。
- 先端 60°與柄部斜度同心度在 0.003mm 以內，保證與您的機台或產品相得益彰，隨心所欲。



### Features :

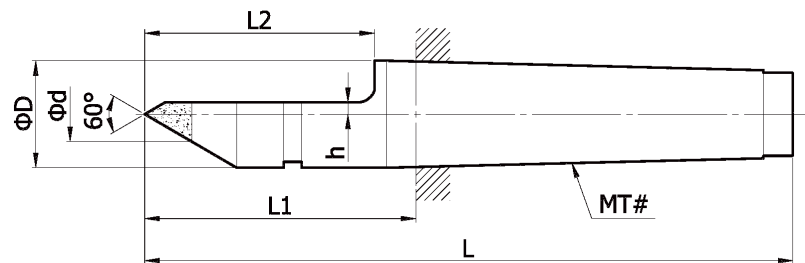
- The shank is tempered and hardened before grinding. Extends its strength and life.
- The inserted tungsten-carbide tip enhances the accuracy and life.
- The joint of tungsten-carbide tip and body is using advanced technology to ensure strong torsion force.
- The large diameter of tungsten-carbide tip provides wide range of center holes.
- Providing various specifications in standard series to meet various user's demands.
- The concentricity is in accordance with ISO to assure well compatibility with your machine.

### HPE 型 Model HPE 偏擺精度(Run out) ≤ 0.003

#### 半邊式鎢鋼頂心

適用於更細小徑工件

**HALF CENTER WITH CARBIDE TIP.**  
Suit for extremely small dia. parts.



訂購編號 ORDER NO	MT#	ød	øD	H	L2	L1	L
MT2HPE40-15	2	7	18	1.5	40	46	110
MT2HPE40-25				2.5			
MT3HPE63-15	3	11	24.1	1.5	63	69	150
MT3HPE63-25				2.5			
MT3HPE63-40				4.0			
MT4HPE70-15	4	14	31.6	1.5	70	78	180.5
MT4HPE70-25				2.5			
MT4HPE70-40				4.0			